

Termination

50Ω, DC to 8 GHz



ANNE-50L

Maximum Ratings

Operating Temperature	-55°C to 100°C
Storage Temperature	-55°C to 100°C

Features

- wideband, DC-8 GHz
- 0.5 watt rating to 70°C ambient
- rugged construction

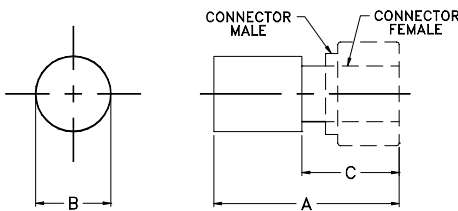


CASE STYLE: LL561
CONNECTOR: M-SMA
PRICE: \$9.95 ea.
QTY. (1-9)

Applications

- cellular communications
- satellite communications
- test set-up

Outline Drawing



Outline Dimensions (inch/mm)

A	B	C	wt.
.58	.36	.36	grams
14.73	9.14	9.14	4.0

Electrical Specifications

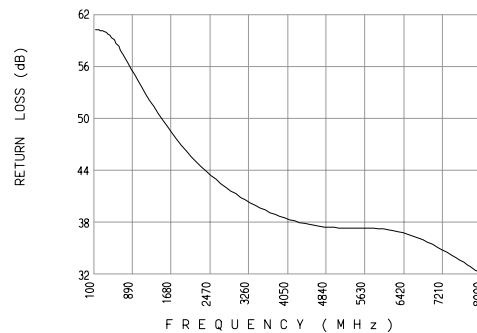
FREQUENCY (MHz)	IMPEDANCE (OHMS)	RETURN LOSS (dB) MIN.		CASE STYLE	POWER RATING* (W)
		DC-4 GHz	DC-8 GHz		
DC - 8000	50	26	21	LL561	0.50

* At 70°C, derate linearly at 0.005W/°C to .35W at 100°C.

Typical Performance Data

FREQUENCY (MHz)	RETURN LOSS (dB)	
	\bar{X}	σ
140	60.71	5.16
500	60.49	5.96
1000	54.50	5.42
2000	46.13	3.82
3000	41.55	3.65
4000	38.80	3.90
5000	37.76	4.89
6000	38.21	7.17
7000	36.39	5.64
8000	32.65	4.32

ANNE-50L



Distribution Centers NORTH AMERICA 800-654-7949 • 417-335-5935 • Fax 417-335-5945 • EUROPE 44-1252-832600 • Fax 44-1252-837010

INTERNET <http://www.minicircuits.com>

ISO 9001 CERTIFIED

REV. OR
M73415
EDR-N/A
ANNE-50L
RVN/RS/CP
000822